



CMB 43 M



JADE YACHTS 170 BANDIDO



ALLOY 40 M

ABT·TRAC®

540

DIGITAL STABILIZERS



The user panel is a touch-screen LCD with large text and graphic keys. All important information is displayed on the Home screen. Low profile and small size (4" x 4.75") allow for easy mounting.

TRAC Digital Stabilizers dramatically improve ride comfort in any sea-state or wave angle. TRAC's 3-term control detects vessel motion and instantly adjusts fin position to counteract roll.

The TRAC exclusive touch-screen LCD user panel is simple and intuitive to operate. With one-touch activation, TRAC automatically adjusts for changes in sea-state, wave angle, and vessel speed.

TRAC's exclusive Fin and Winglet are computer optimized to generate more anti-roll force and less drag than conventional fins.

TRAC actuators feature a unique fail-safe capability that mechanically locks the fins when required. No more lifting floorboards or trips to the bilge to "pin the fins".

TRAC Stabilizers are built for heavy-duty service. Load bearing components are intentionally oversized. Double sealed shaft housings require no maintenance between haulouts. Our unique inboard hull flange mounting system speeds installation and eliminates costly, dry rot prone, wooden blocks.

TRAC systems are extensively documented and delivered ready-to-install. Key assemblies are factory tested, and cabling is custom fabricated for every vessel. Expert support is always available from factory technicians and through our global service network.

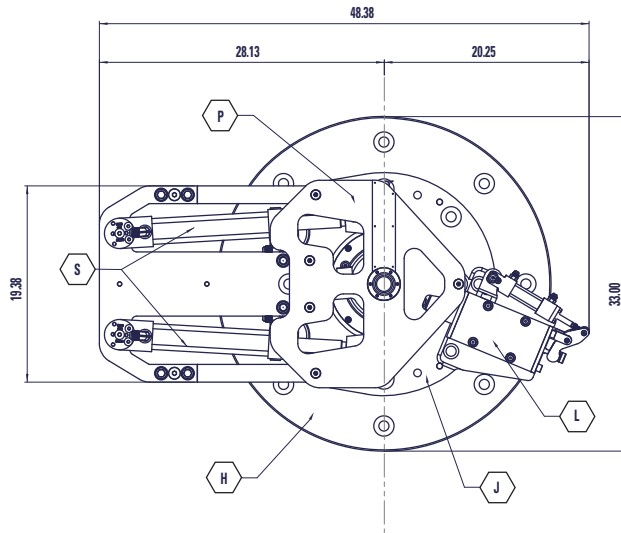
TRAC Digital Stabilizers are installed as standard equipment by more of the world's top yacht builders than any other brand. For exceptional performance, highest quality, and unmatched support, choose TRAC.

Taking Care Of You Every Step Of The Way.

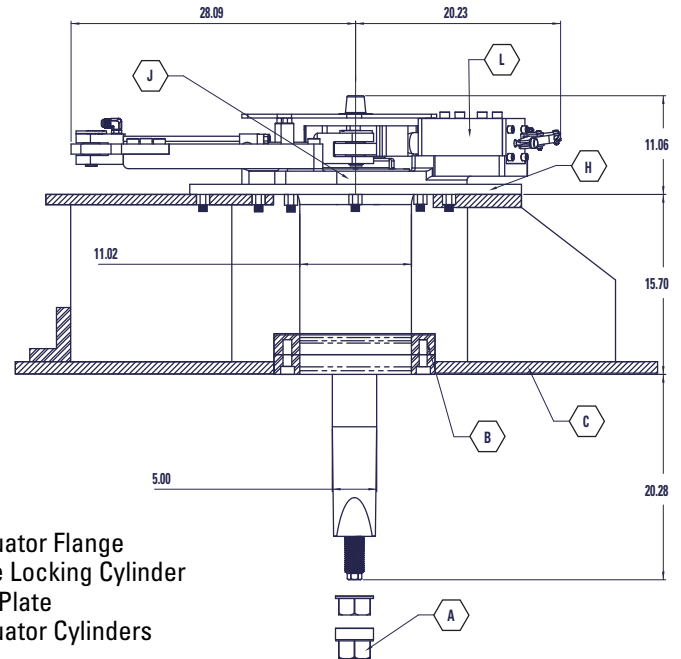
ABT·TRAC®

517-A Martin Avenue, Rohnert Park, CA 94928 USA
TEL 707•586•3155 800•535•5377 FAX 707•586•3159
www.thrusters.com

Top View



Side View (GRP Hull)



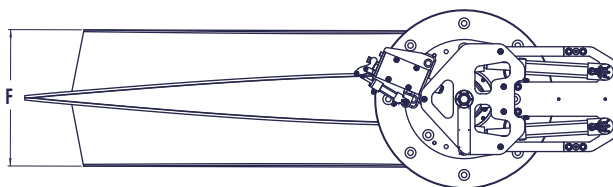
- A. Fin Nut
- B. Hull Flange Assembly
- C. Augmented Hull Thickness (Note 1)
- E. Platform Flange and Gussets (Note 2)
- H. Companion Flange
- J. Actuator Flange
- L. Yoke Locking Cylinder
- P. Top Plate
- S. Actuator Cylinders

Notes:

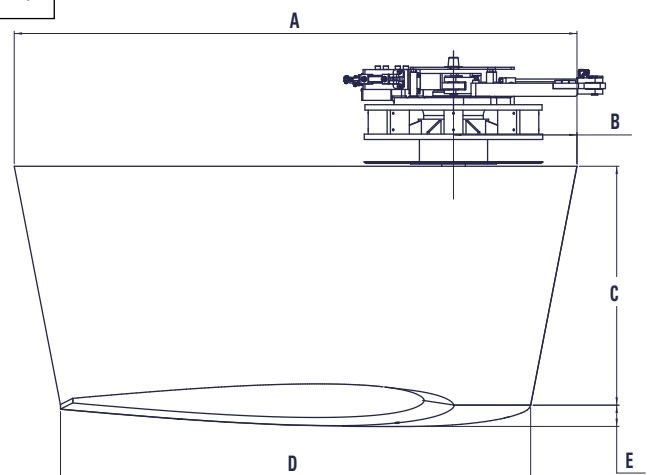
1. It is the responsibility of the installer to determine what reinforcement measures should be taken to properly strengthen the hull for withstanding forces that may be encountered if the fin or the fin shaft strikes an immovable object while the vessel is underway. Recommendations made by Arcturus Marine are to be used as starting guidelines only.
2. Platform Flange with integrated gussets, hull framing and stringers, are provided by the customer according to the naval architect's specifications. For steel hull vessels the platform may be omitted when gussets are welded directly to the Actuator Companion Flange.
3. Dimensions shown are for reference only and are subject to change. Do not use for installation.

FIN SIZE	A	B	C	D	E
26.0x	Inch (cm)	Inch (cm)	Inch (cm)	Inch (cm)	Inch (cm)
	118.5 (301)	26.0 (66.0)	50.3 (127.8)	99.0 (251.5)	4.6 (11.7)

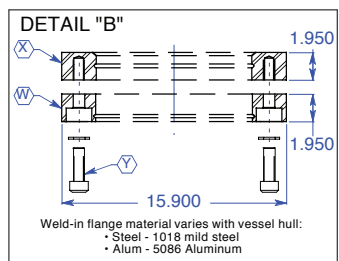
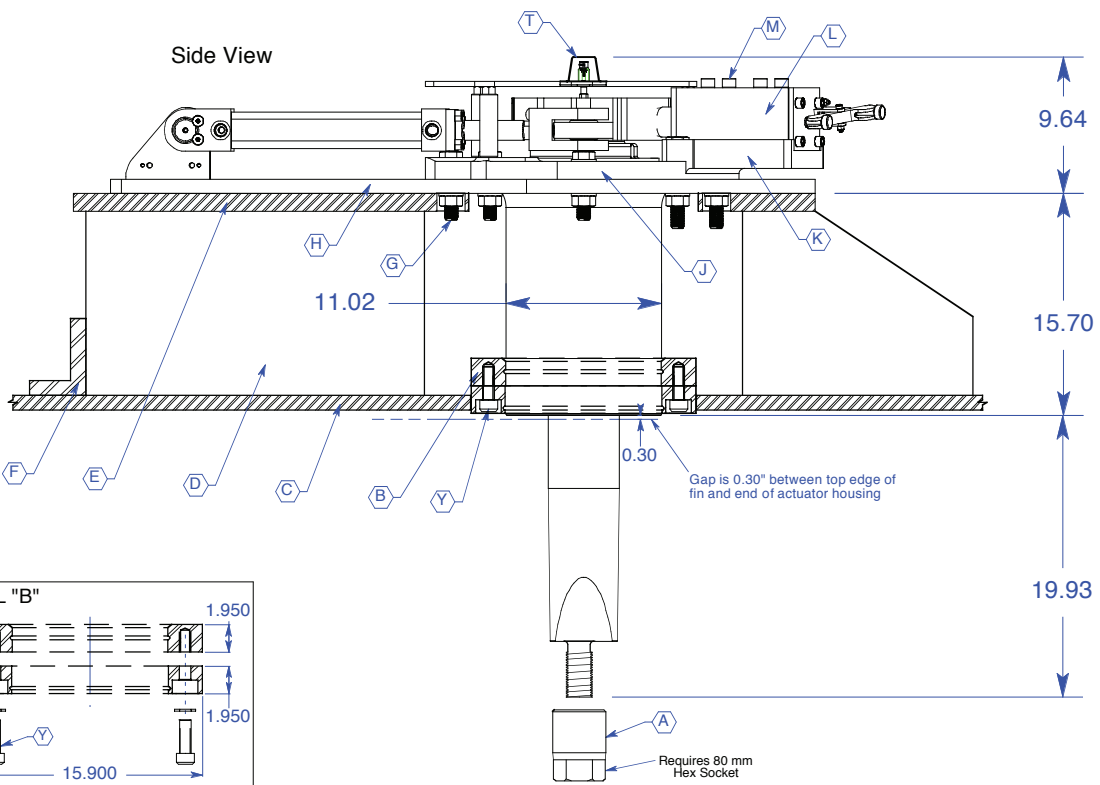
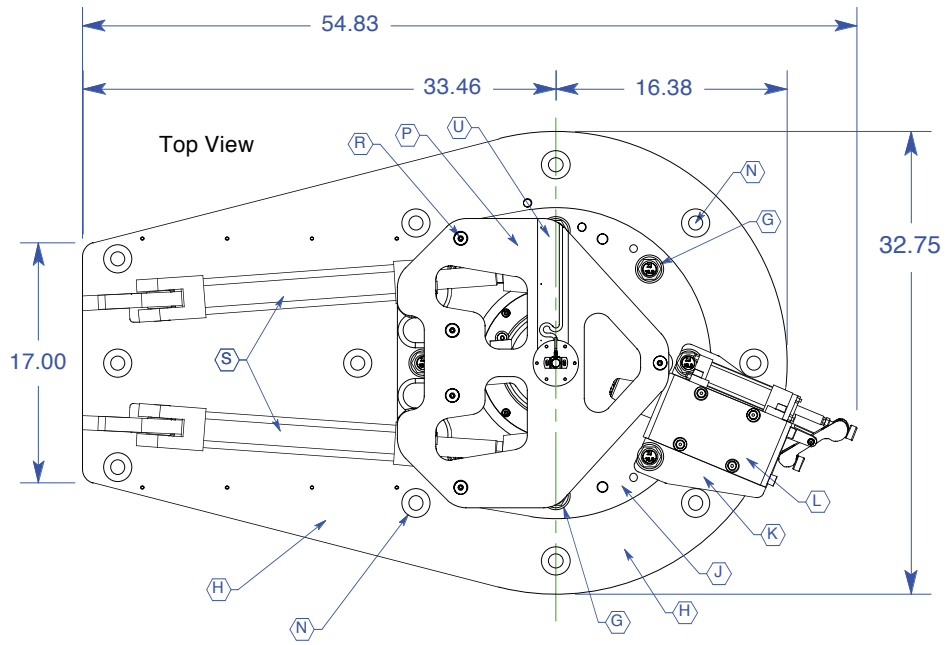
Top View



Side View



Dimensions shown for reference only and are subject to change. Do not use for installation.



Assembly Parts

A. Fin Nut *	M. Locking Cylinder Screw
B. Hull Flange Assembly (Note 2)	N. Platform Bolt Hole (Note 3)
C. Augmented hull thickness (Note 1)	O. Yoke Clamping Screw
D. Platform Gusset (Note 3)	P. Top Plate
E. Platform Flange (Note 3)	R. Top Plate Screw
F. Hull Framing (Note 3)	S. Actuator Cylinder
G. Actuator Flange Bolt (Note 4)	T. Position Sensor Cover
H. Companion Flange (Note 5)	U. Sensor Cable Cover
J. Actuator Flange	W. Weld-in Hull Flange
K. Locking Cylinder Platform	X. Bolt-on Hull Flange
L. Yoke Locking Cylinder	Y. Hull Flange Screw

Assembly Fasteners

Part	Description	Qty	Size	Install Torque ft-lb / (Nm)	Install with Coating ***
A.	Fin Nut *	1	M48 -5.0	1000 / (1356)	Loctite® 262
G.	Actuator Flange Bolt	8	M24 -3.0	400 / (542)	H
M.	Locking Cylinder Screw	4	M16 -2.0	180 / (244)	M
N.	Hole for Platform Bolt	11	M24 -3.0	400 / (542)	H
O.	Yoke Clamping Screw	1	1" -14	500 / (678)	H
R.	Top Plate Screw	5	1/2" -13	70 / (95)	M
T.	Sensor Cover Screw	6	M5 -0.8	1.5 / (2.0)	--
U.	Cable Cover Screw	6	M3 -0.5	0.3 / (0.4)	--
Y.	Hull Flange Screw	8	M20 -2.5	140 / (190)	M

* Requires 80 mm hex socket.
 *** M = Medium strength thread lock compound; H = High Strength thread lock compound.
 Installation torques shown here require coating on threads and also, as lubricant, under bolt head or nut, whichever is turned.

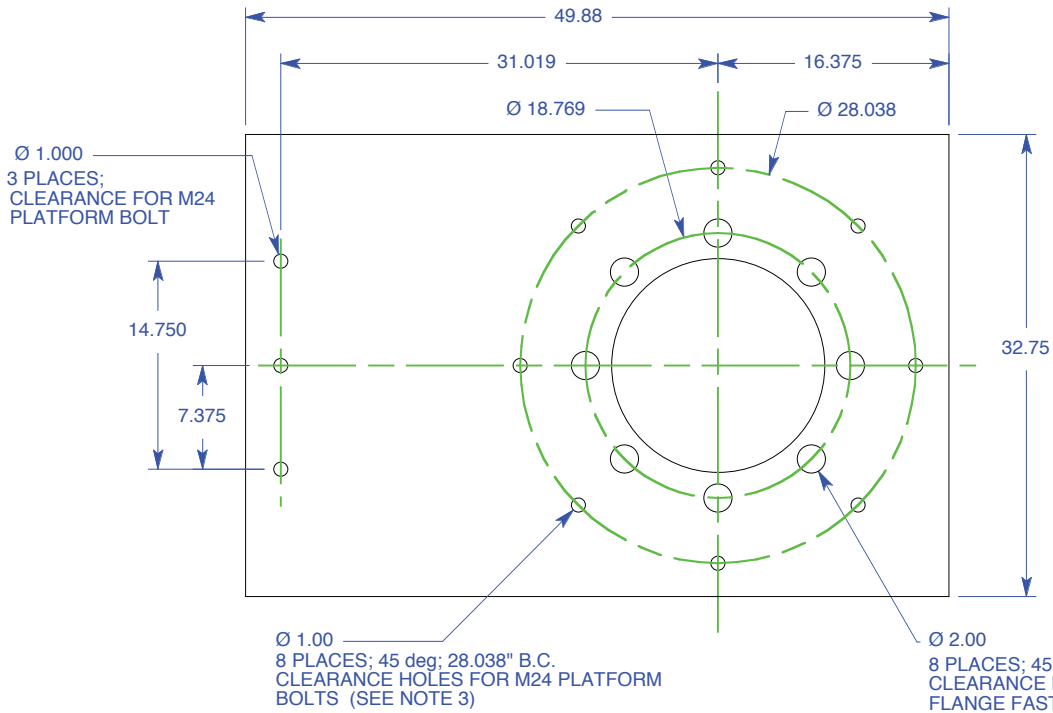
NOTES:

- It is the responsibility of the installer to determine what reinforcement measures should be taken to properly strengthen the hull for withstanding forces that may be encountered if the fin or the fin shaft strikes an immovable object while the vessel is under way. Recommendations made by American Bow Thruster are to be used as starting guidelines only. American Bow Thruster is NOT a naval architecture firm and is NOT qualified to advise on structural matters. American Bow Thruster strongly recommends that you seek the advice of a naval architect familiar with your make of vessel.
- See inset "Detail B" for Hull Flange Assembly details.
- The Platform Flange with its integrated gussets, hull framing and stringers, are provided by the customer according to the naval architect's specifications. See sheet 2 (attached) for recommended minimum dimensions and required details applicable to a platform flange.

For steel hull vessels the platform flange is not required when the builder's architect elects to weld hull gussets directly to the Actuator Companion Flange.
- Actuator Flange Bolts have been factory installed to mate the Actuator and Companion Flanges. High strength thread locking compound has been used on bolt threads.
- The Companion Flange has been factory installed onto the Actuator Flange.
- Actuator specifications and dimensions are subject to change without prior notice. Do not use this print for final installation without contacting the factory for certified dimensions.

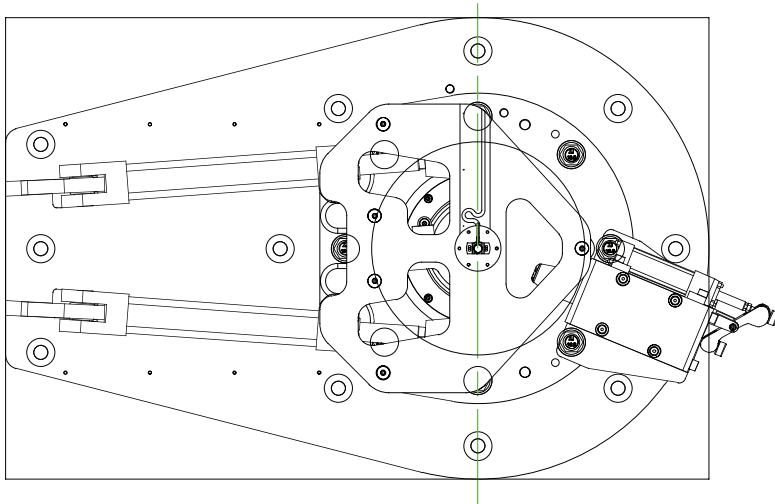
ARCTURUS MARINE™ TRAC® 517-A MARTIN AVENUE
 AMERICAN BOW THRUSTER™ ROHNERT PARK, CA 94928
 707.586.3155 Tel
 707.586.3159 Fax
 http://www.thrusters.com

This drawing, design, and all information contained herein, is the exclusive property of Arcturus Marine. Reproduction in whole or in part without the consent of Arcturus Marine is expressly forbidden. All applicable copyright laws apply.	REVISED		SPECIFICATION SHEET - ACTUATOR SIZE 540		
	DRAWN	RJP	Parts & Dimensions for METAL Hull Installation All DIMENSIONS are inches unless noted		
	CHECKED		SCALE: NONE	SHEET: 1 OF 2	REV: A
	ISSUED	04/25/2008			



NOTES:

1. All dimensions are Inches unless noted.
2. Platform supplied by installer when needed. Builder's naval architect to determine thickness and outside dimensions of platform.
3. Platform Fasteners to be supplied by installer according to platform thickness. Fasteners to be M24 Grade 12.9 and installed with high strength thread locking compound



ARCTURUSMARINE™ TRAC® AMERICAN BOW THRUSTER™		517-A MARTIN AVENUE ROHNERT PARK, CA 94928 707.586.3155 Tel 707.586.3159 Fax http://www.thrusters.com		
		SPECIFICATION SHEET - ACTUATOR SIZE 540 PLATFORM FLANGE		
This drawing, design, and all information contained herein, is the exclusive property of Arcturus Marine. Reproduction in whole or in part without the consent of Arcturus Marine is expressly forbidden. All applicable copyright laws apply.		REVISED DRAWN <i>RJP</i> CHECKED	Parts & Dimensions for METAL Hull Installation All DIMENSIONS are inches unless noted	
ISSUED	04/25/2008	SCALE: NONE	SHEET: 2 OF 2	REV: A